



# Gloucestershire Community Foundation Impact Report

January - December 2021

# Report Contents



Page 3	CEO Update
Page 4	Vision, Mission & GOALS
Page 5	Our 2021 Timeline
Page 8	What our community says about us
Page 10	Grant-Making in numbers
Page 13	Hear about those we serve
Page 16	Stories of success
Page 18	Community Leadership: INVEST Leadership Programme
Page 21	Team News
Page 22	Board News
Page 24	Thank you

# Talitha Nelson, CEO

2021 was another big year for GCF. We worked with and for the charities and communities of Gloucestershire as they started to emerge from the Covid pandemic.

We were delighted to deliver our largest ever Main Grants Panel in March, awarding £92,000 in grants to support Gloucestershire. Throughout 2021 we distributed over £700,000 and over the last two years more than £2million - this equates to awarding more than 500 grants to 271 charities, supporting more than 184,000 people - an incredible achievement for a team of just 3!

We also focused on our research into local needs around recovery from Covid, in particular looking at what areas charities felt they needed support in. We asked the question "How can we support in ways other than funding?" and off the back of our research, we listened and we launched our INVEST Leadership Programme for Gloucestershire charities, more on this on pages 17-19.

While completing our day jobs we were also put through a rigorous full independent organisational quality assessment in order to be accredited with UKCF. We were thrilled to pass with flying colours, giving everyone internally and externally real confidence in the work we do.

As we look ahead to another exciting year in 2022, we are acutely aware of the challenges we are facing as a society. Most charities are reporting their referrals and waiting lists are increasing by 50% upwards; the pandemic has exacerbated the issues that we already had, so need is at an all time high. Therefore we continue to be enormously grateful for the support of our fund-holders, donors, partners, trustees and volunteers. It is you who fund Gloucestershire, address the most urgent needs of the county and build a sustainable everlasting resource to keep growing this community long into the future.

Community Foundations are here for life, so we look forward to working with our current donors as well as meeting new donors who can help us continue on this journey of building strength and prosperity in our county of Gloucestershire.

# Vision, Mission & Goals

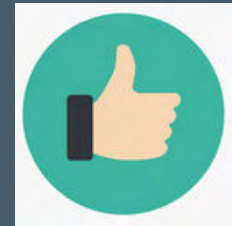
**Vision:** Gloucestershire is a place where people and communities are empowered to become resilient and strong

**Mission:** Strengthen our communities so they can thrive, through inspiring giving, providing grant funding and developing partnerships.

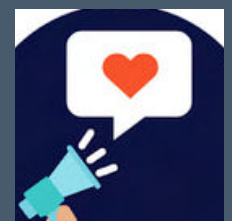
---



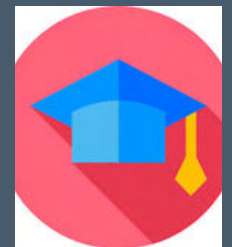
**Grow:** Income and capital to benefit Gloucestershire now and in the future by nurturing and supporting a committed community of donors



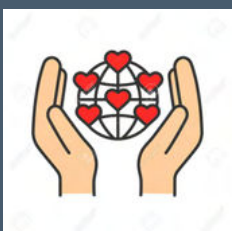
**Offer:** A centre of excellence by promoting and encouraging best practice and innovation in giving and grant making



**Advocate:** On behalf of our communities, promoting equity and diversity in everything we do



**Learn:** By identifying projects and organisations that help address local needs, raising awareness and supporting local solutions



**Support:** Through positive leadership, striving to lead by example in everything we do

# Our 2021 timeline

## February

GCF launched INVEST leadership programme, The programme is a key part of our commitment to support the voluntary sector in Gloucestershire with more than funding

## March

We had our largest Main Grants panel, awarding £92,000 worth of grants

## June

By the end of June, GCF had awarded our first 100 grants of the year - aiming to support approximately 112,000 people in Gloucestershire

## February

We released our research report, 'Supporting Solutions'

## March

Cellnex Digital Programme launched to support communities with digital access

## April

In partnership with Made By Sport, UKCF and Active Gloucestershire, the Clubs in Crisis programme opened for applications. Across two rounds, we are able to award over £60,000 to 28 organisations in the county

## June

GCF completed QA5 accreditation from the UK Community Foundations (UKCF). This is a testament to our hard work and demonstrates that we are a responsible funder.

# Our 2021 timeline

**August**

10th anniversary of the Freemason's Fund. Through the Fund we have awarded £269,885 supporting 159 organisations.

**September**

We agreed a partnership with The Nelson Trust to develop a community garden. Work began in December.

**November**

UKCF Together 2021 Online Conference brought all the UK Community Foundations together to discuss how we can support equitable and inclusive communities

**December**

We launched our brand new website

**September**

Our CEO Talitha Nelson was invited to speak about our innovation work here at GCF, at the UKCF Chair Day

**October**

The final panel meeting of our two year Carers Gloucestershire grant programme brought the total of grants awarded to projects for adult carers in Gloucestershire to **£376,829**

**November**

We launched our annual Surviving Winter Appeal



**2020-2021**

**£2.2 million**

**awarded in 500 grants**

**supporting**

**184,000 people**



# What our community has to say about GCF...

"A huge thankyou to the amazing team at Gloucestershire Community Foundation and their generous grant to enable us to continue to offer our counselling sessions either via online or telephone appointments"

*Listening Post Counselling*

"A timely grant from GCF has helped us to coordinate our Bags of Play appeal during May. Vital funds to help us get 1,000 more bags out to 1,000 more children who need them"

*Play Gloucestershire*

"The sharing of information and supporting of best practice, along with timely notifications of funding opportunities at a time of challenging communications have been a godsend.

Thank you to all concerned."

*Leonard Cheshire of Gloucestershire*



"Thank you to GCF for granting us £6,000 which will be used to cover the cost of our support team to ensure ongoing professional support is maintained for our residents."

*Emmaus Gloucester*

"There has been such a brilliant response to the youth theatre sessions and it has meant a lot to the young people and families involved."

*Strike A Light*

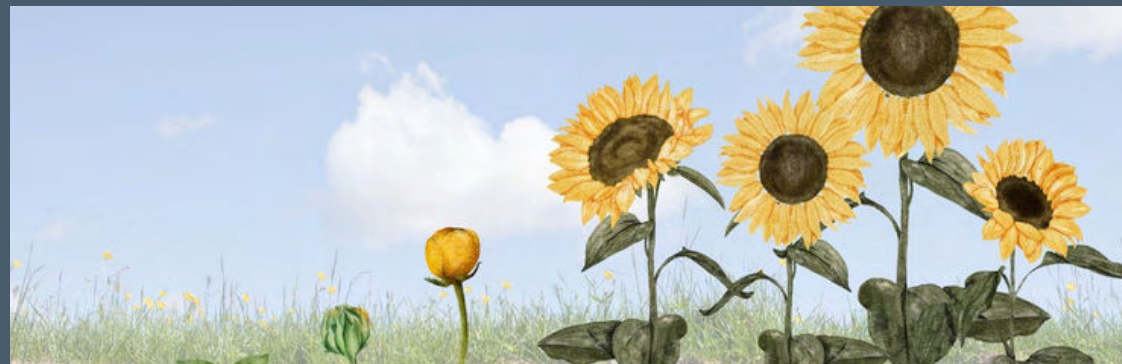
"We just love GCF, our local funder - you understand the issues we have in the county around rural poverty and isolation, lack of provision for young people and inclusion in mainstream activities."

*Creative Sustainability*



# What our community has to say about GCF...

"With thanks to Gloucestershire Community Foundation, we are able to offer a limited number of video link counselling sessions to our beneficiaries who are bereaved by suspected suicide. A huge thank you for this very much needed support, especially at such a challenging time."  
*Sunflowers Suicide Support*



Another day feeling grateful for the vital support being shown to charities in their recovery and resilience post Covid. Special thanks to Gloucestershire Community Foundation for the grant to fund increased administration resource due to high demand for counselling."  
*Gloucester Counsellors*



"We really appreciate everything about GCF - the ease of application, follow up questions are always useful, and the reporting mechanism is proportionate and accessible. Thanks for being an excellent grant-making body."  
*Creative Sustainability*



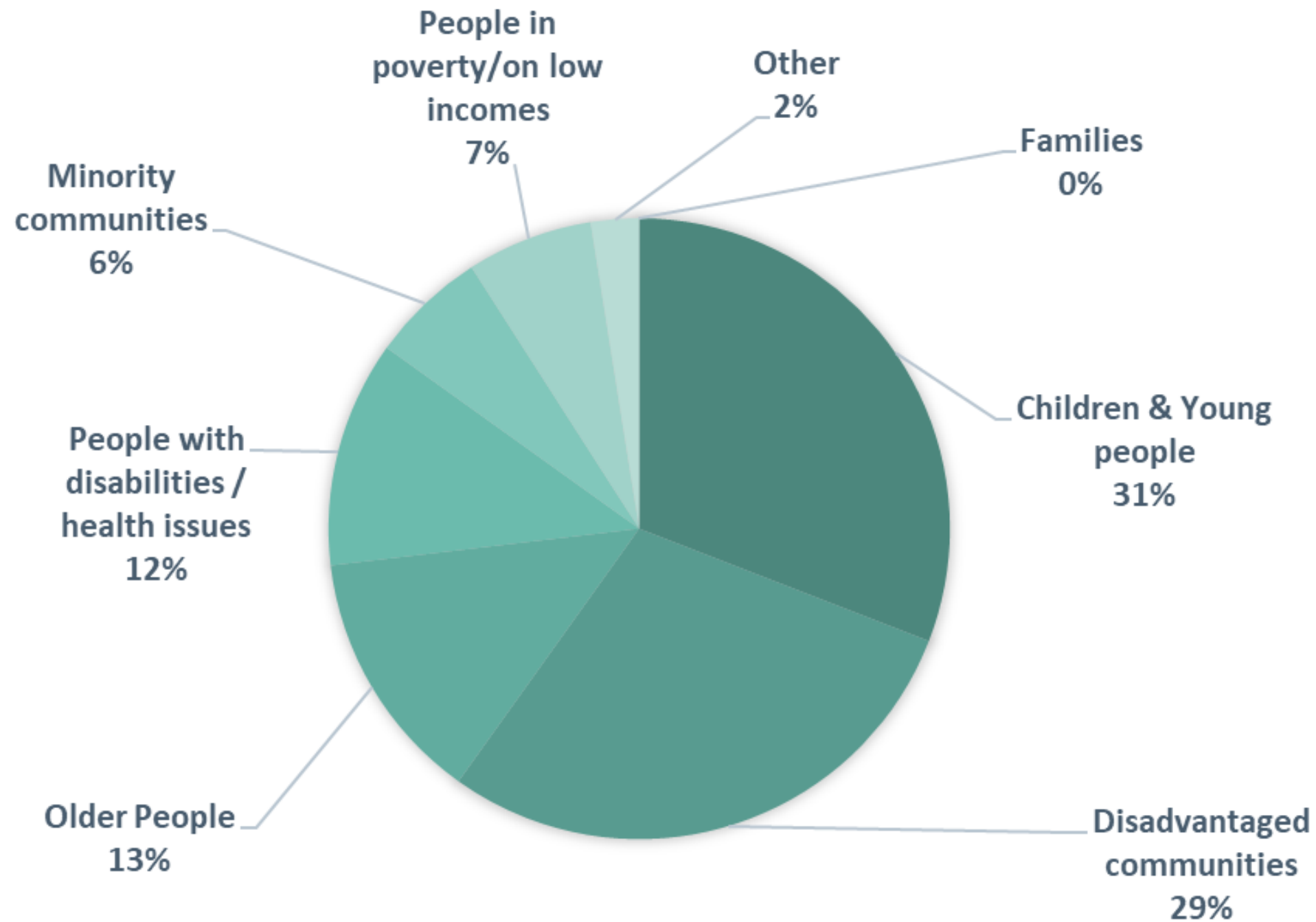
It's World Food Day and with no hungry children staying at our farms the team at Wick Court, supported by GCF, have been busy harvesting fruit & veg and delivering to The Long Table to create nourishing home cooked meals to help feed families in and around Stroud  
*Farms for City Children*



"We are so thankful to you for your prompt and helpful support. You were all very calm and reassuring - that is so appreciated - and actually, I said to my colleagues, it was quite humbling because we could tell that you all really did care about how this was going to impact us as a charity and the young people that this would have an impact on."

*TIC+*

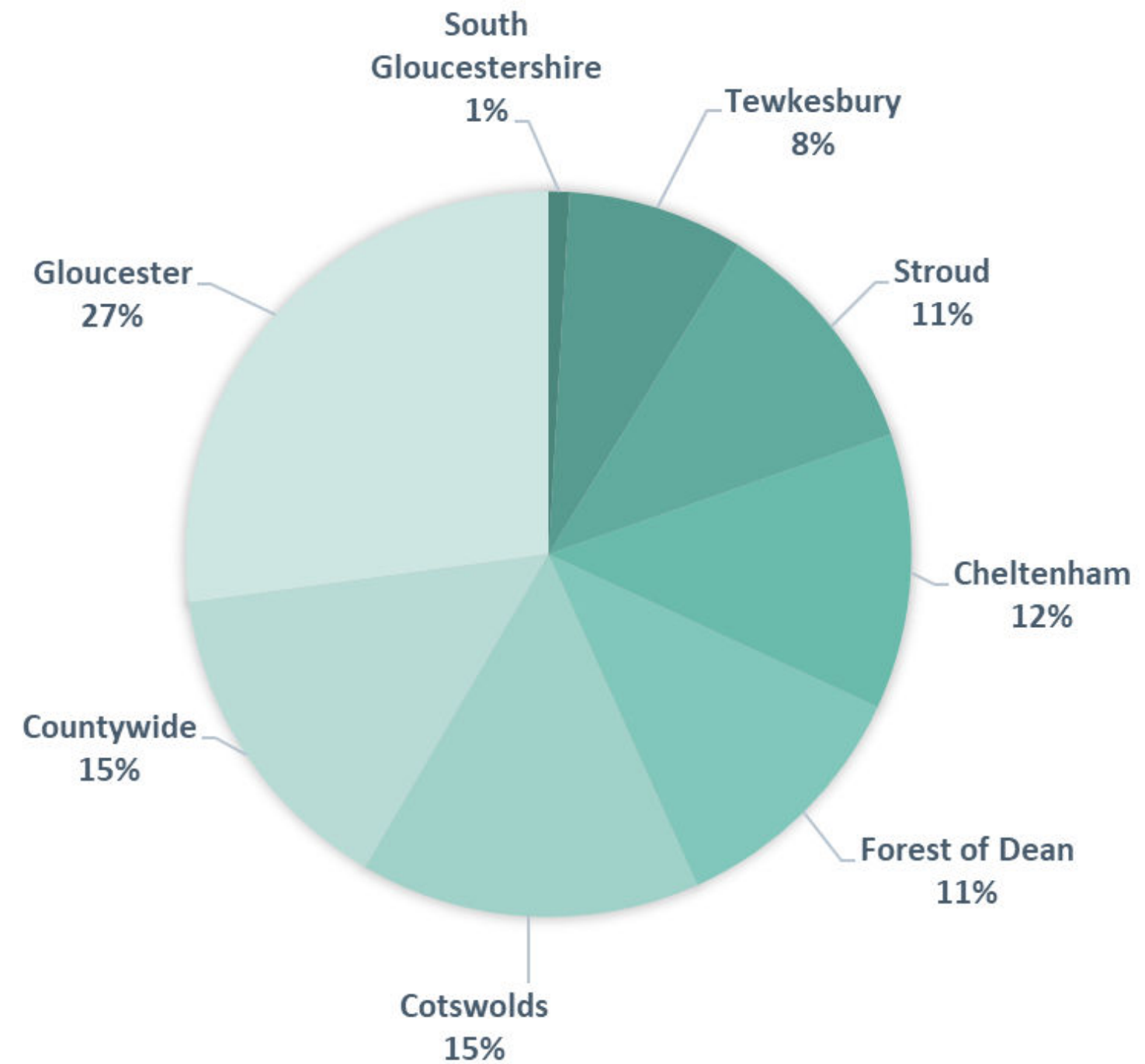
# 2021 Grant-making in numbers: Beneficiaries



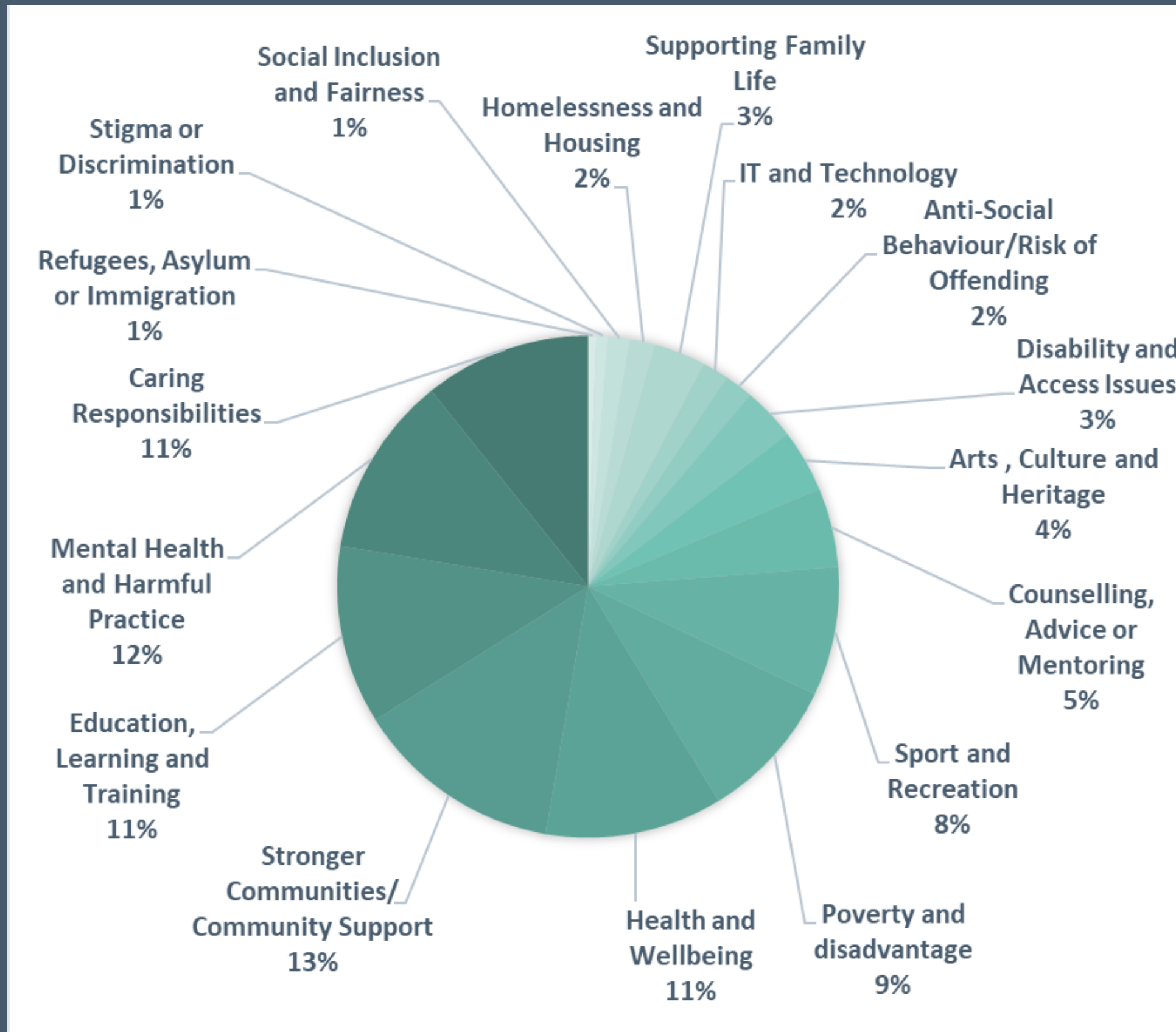
More than 50% of grants given benefitted children and young people and those from disadvantaged communities. Older people and those living with disabilities and other health difficulties also received a higher proportion of grants last year. We are pleased that our support for minority communities has increased by 2% this year and we will continue to work to ensure that all communities are well served by our grant-giving.

# 2021 Grant-making in numbers: Geographical Areas

GCF awarded grants throughout the county, with a slightly higher proportion going to organisations and projects based in the city of Gloucester. We also continue to strive to reach rural communities to ensure that communities' needs are met throughout the county.



# 2021 Grant-making in numbers: Issues addressed



**We addressed a wide variety of issues with our grant giving. Against a backdrop of the pandemic, mental health, wellbeing, community and education all became urgent issues and we are proud to have played an important role in supporting these.**

# 2021 - Hear about those we serve



The Family Haven received £10,000 from GCF for its Parent Support Programme. The grant is helping parents and children develop new skills

Staff at National Star were able to continue supporting students and residents with complex disabilities, thanks to a grant from GCF which was used to purchase essential PPE equipment.



We have been supporting Read with Me, a fantastic project matching volunteers with primary schools to listen to children read



GCF provided funding to Share and Repair Stonehouse to make improvements to the shop. Customers have commented on how bright it looks.



**In May Gloucester Cathedral launched an Art for Wellbeing project supported by funding from GCF. The sessions support people with experience of or at risk of homelessness in the city**

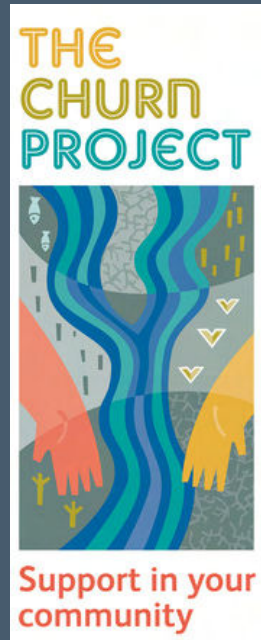
**In August, Rising Stars used funding from the Made by Sport programme to organise a summer fun day, providing some fun following several very challenging months**



**Play Gloucestershire continued to provide 'Bags of Play' to children in need of a playful boost. Since the first lockdown in 2020, the charity has delivered more than 2,500 bags.**



**We have been supporting Alabare Gloucestershire Homes for Veterans. This ongoing relationship has ensured the safety of extremely vulnerable homeless veterans in the county.**



The Churn Project helps to find practical solutions to life's issues alongside the vulnerable and marginalised people across the Cirencester community who seek support. It works with those who are lonely, at a point of transition or crisis in their lives, or experiencing mental health issues, supporting them through difficult times.

GCF supported this charity with a £2,000 grant towards the Good Neighbours befriending programme for older people. Thanks to this funding, The Churn Project was able to support over 90 people with a weekly visit or phone call from somebody outside of their family.

***"It has been such a relief and reassurance to know that somebody is looking out for her and who she considers to have become a true friend."***



Priors Park Neighbourhood Project has been serving the local residents of Priors Park since 2004. The services offered are often a lifeline to residents.

This includes an internet cafe, careers advice from National Careers Service, advice and information drop-ins from The Citizen's Advice Bureau and Green Square Housing.

Thanks to a grant of £1,680 from GCF, the charity was able to support 200 people in Tewkesbury with food supplies during 2021. The money that members of the community saved thanks to the scheme meant that they were able to pay essential bills which would not otherwise have been possible.

***"It has been a lifesaver financially and the social interaction has helped me with my mental health. Long may this fantastic service continue"***



Artlift is a specialist creative health charity co-producing projects and courses for people living with mental health challenges, long-term chronic pain and/or who are living with or moving on from cancer.

Grant money of £5,650 provided by GCF enabled Artlift participants to create informal groups, to maintain social contact and continue to make art. This grant will improve the Move On experience for future Artlift participants. The research dived deep into the challenges, pitfalls and strengths of Move On informing recommendations, guidance, templates and opportunities for both individuals and groups Moving On from Artlift.

***"Artlift has definitely increased my confidence... I am enjoying my creative journey very much and wondering where my next steps will take me on this Move On journey."***



# Stories of success

info  
buzz

Heart Heroes received £4,957 towards the charity's I CAN programme of inclusive activities to help build confidence in young people suffering from heart conditions. The sessions have really helped children and their families:

"One mum was brought to tears about how relieved she felt to be able to watch her daughter 'play' and interact with other children. She said her fears and nervousness have had a real impact on the ability to keep up with other children.

Since taking part in I CAN, this mum has seen for herself that the child knows her limits and CAN take part in physical activity safely, she CAN climb like other children, she CAN sit next to other children without risking her health, she CAN act with confidence and more importantly, mum CAN let her get involved safely.

She has now joined Rainbows and has become a really confident little girl, not letting her condition prevent her from doing anything!"

Infobuzz received a grant of £10,000 a year for two years towards a programme of support for carers of young people suffering mental illness. This story really highlights the impact the programme has:

"My daughter had stopped eating and would spend all day in her room. I knew that she was self-harming in the bedroom but whenever I tried to talk to her about it, it would end in a massive argument.

I felt like I was failing as a parent. Everything I tried seemed to make it worse. I felt so alone. Then I was told about Infobuzz.

Infobuzz referred me to talking therapy which helped loads. Just having infobuzz to talk to and listen to, knowing that someone was there who cared and supported me was what I really needed.

My daughter has seen the difference in me and it has allowed me to talk about how I manage my mental health. She asked what it was like in talking therapy, and now she is willing to give it a go herself. We now spend time together and are doing up the garden together. Her eating is still a problem, but now she is willing to get help and I don't think that would have happened if I hadn't got help myself."





# Stories of success

Cotswold Friends received a grant of £5,000 to provide support for older and isolated carers:

*"Our Carer Support Project Worker received a call from a client (CB, who is a carer) who was in distress. She needed to go to hospital with chest pains, but she was unable to do so due to her full-time caring responsibility to her husband. She was prescribed blood thinners in the interim.*

*CB tried to arrange emergency care through a private company so that she could go to hospital, but was told nobody would be available until 9am. This meant remaining at home all night to care for her husband, despite her GP's advice to attend hospital.*

*Our team began chasing the issue, making phone calls to a range of local organisations to ensure CB was properly looked after. After a great deal of calling around on our part, CB got the help she needed to allow her to attend hospital.*

*It later transpired that she had pneumonia and two blood clots - so it was absolutely essential that she was treated quickly!"*

## Wickselm House Learning Centre

Wickselm House CIC received a grant of £4,600 towards resources for their education centre for children who are unable to access mainstream education. The impact on children cannot be overstated:

*"F was six when he joined our cohort. He had not been able to access any kind of setting successfully away from home and needed to be physically close to his mum at all times due to undiagnosed ASD and sensory challenges. This had caused F and his mother to become extremely isolated and his mother was unable to work.*

*We used this grant to create a sensory room where F was able to spend time with his mum and carer. Over the past few months he has developed a relationship with his carer, allowing his mum to move across the room and begin work on her computer.*

*We were also able to use the room to carry out an educational assessment on F. This will allow local authority funding to be awarded so that F can attend more often and mum can continue her career.*

*F has now started to venture outside to our garden and Forest School area with his carer. This has transformed his life."*

# GCF Community Leadership; INVEST Leadership Programme



**Partnerships that  
deliver impact**



**Funded by**





## **GCF Community Leadership: INVEST Leadership Programme**

**Through extensive research in 2020-2021 our Charity leaders said they felt isolated and lonely and requested mentoring and an opportunity to develop their peer to peer support. As well as funding, they would also really benefit from other practical support, such as help with facilitating partnerships and collaborations, marketing & resilience planning. So we listened and recognised GCF needed to do so much more to help the recovery of our sector and county; the INVEST Leadership Programme for Gloucestershire Charities was born.**

**We responded by launching and funding the first two programmes, “INVEST Mentoring” & “INVEST Peer to Peer”, which were initiated in late 2020/early 2021 as a partnership between ourselves, The Honourable Company of Gloucestershire and Cranfield Trust.**



# Community Leadership: INVEST Leadership Programme

## Founder and Director - Read with Me

*“Launching a third sector organisation can be a daunting and often lonely business where you often doubt your own ability and experience. My mentor has given me a touchpoint every month to work through issues, prioritise and reset. He has also given me such a boost, which when you're working round the clock is really something. Our one-hour power hours have been transforming.”*

## CEO, Forest Voluntary Action Forum

*“My mentor was everything you could ask for in a mentor. He listened, didn't judge, and provided helpful insight when required. When I started this process I was worried it would take up too much of my time, but if anything I now feel like I have more time due to the changes I've made in my work and personal life.”*



# Team News

In March, Talitha was honoured with a High Sheriff Award 2021 for her tireless commitment to growing GCF & raising vital funds and supporting the communities of Gloucestershire.

In September, CEO Talitha Nelson was invited to speak at the UKCF Chairs Day, where she was very well received. She talked about our innovative work at Gloucestershire Community Foundation.



At the end of a challenging year punctuated by Covid-19, the team did manage to have a Christmas party of sorts. We were grateful for the opportunity to celebrate a challenging but rewarding year.



## Erin Hughes - Philanthropy Manager

Erin joined in December from Cause4, where she worked as a Development Associate, consulting charities on fundraising, membership, governance and much more. She has experience working in a large charity environment, having spent three years at Midlands Air Ambulance Charity. She also has experience in very small community organisations - in 2014 she set up a choir for people affected by cancer. She is really excited to be working with an organisation so committed to our local community and is looking forward to making a difference in Gloucestershire, meeting the amazing supporters who make our work possible.



# Board News



**We would like to say a huge thank you to our outgoing Chair of Trustees, Jamie Tabor, who retired in March 22. Jamie has tirelessly served GCF as our Chair for just over 4 years.**

**Under his leadership he has taken GCF through its greatest changes and challenges. Firstly restructuring GCF, investing in staff and operations, which was the right decision as it set GCF up to be at the forefront of supporting our county throughout the Covid Pandemic.**

**Jamie not only supported the CEO and Trustees but at the height of the pandemic he became a fulltime member of staff to help cope with the executive workload. We are incredibly grateful for his unwavering commitment and hard work and most of all his enthusiasm, positivity and warmth that he brings to all he comes into contact with.**

**We are delighted Jamie is staying on as a trustee and will continue to do the things he really loves, such as visiting the charities we support, sitting on grants panels and attending GCF and sector events.**

# Board News

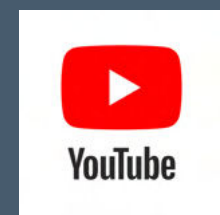


Our search for a new Chair started in 2021, an open recruitment process, advertising and interviewing by panel, made up of two trustees and the CEO. We had an excellent response so it was a tough decision, however Dr Charlie Sharp was chosen and we are delighted he has stepped into post, as Jamie retired in March 22.

Charlie is a Respiratory Consultant at Gloucestershire Hospitals NHS Foundation Trust and works across hospital and community settings in Gloucestershire. He works closely with the CCG in developing new pathways and is particularly interested in embedding the voluntary and community sector into the evolving Integrated Care System in Gloucestershire. Now the clinical lead for Prevention and Population Health Management approach to Health Inequalities and if he wasn't busy enough, is completing an MBA through the Senior Leaders programme supported by the hospital trust.

Charlie has been involved with Community Foundations for more than 10 years, initially in Bristol and now in Gloucestershire and has always viewed the role of effective and evidence based philanthropy as central to supporting communities. His free time is divided between wrangling young sons and running long distances.

# Thankyou



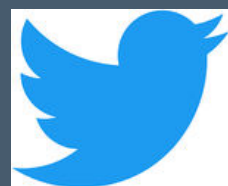
This has been another challenging and unusual year. The emergencies and crises caused by the ongoing pandemic have meant that our grants were more important than ever in 2021, and we are so grateful to all of our supporters, who have made sure that throughout the year we were able to support those most in need.

However, if reading this report has also inspired you to think about the future,  
*"I would love to give back to my community, but I'm not sure how".*

There are so many ways you can get involved; we work with all sectors, individuals, families, businesses and statutory bodies, delivering impactful funded programmes.

Philanthropy is also about giving back in all its forms. This may be volunteering, reading with children or becoming a charity trustee, to pro-bono working using your skills to help the sector through our INVEST Programme, or your business/ family may want to leave a lasting legacy to Gloucestershire. We would love to hear from you at [ceo@gloucestershirecf.org.uk](mailto:ceo@gloucestershirecf.org.uk)

We so look forward to meeting more of you in 2022 and to changing even more lives through our programme of grant-giving and charity leadership.



@CFGlos



@gloucestershirecf.org.uk



glos\_community\_foundation